

miniatures.com
discount dollhouses & more

#92018 Three Gables House

Available exclusively from Hobby Builders Supply/miniatures.com
Step-by-step assembly instructions

Copyright HBS/miniatures.com 2018

MDF PARTS:

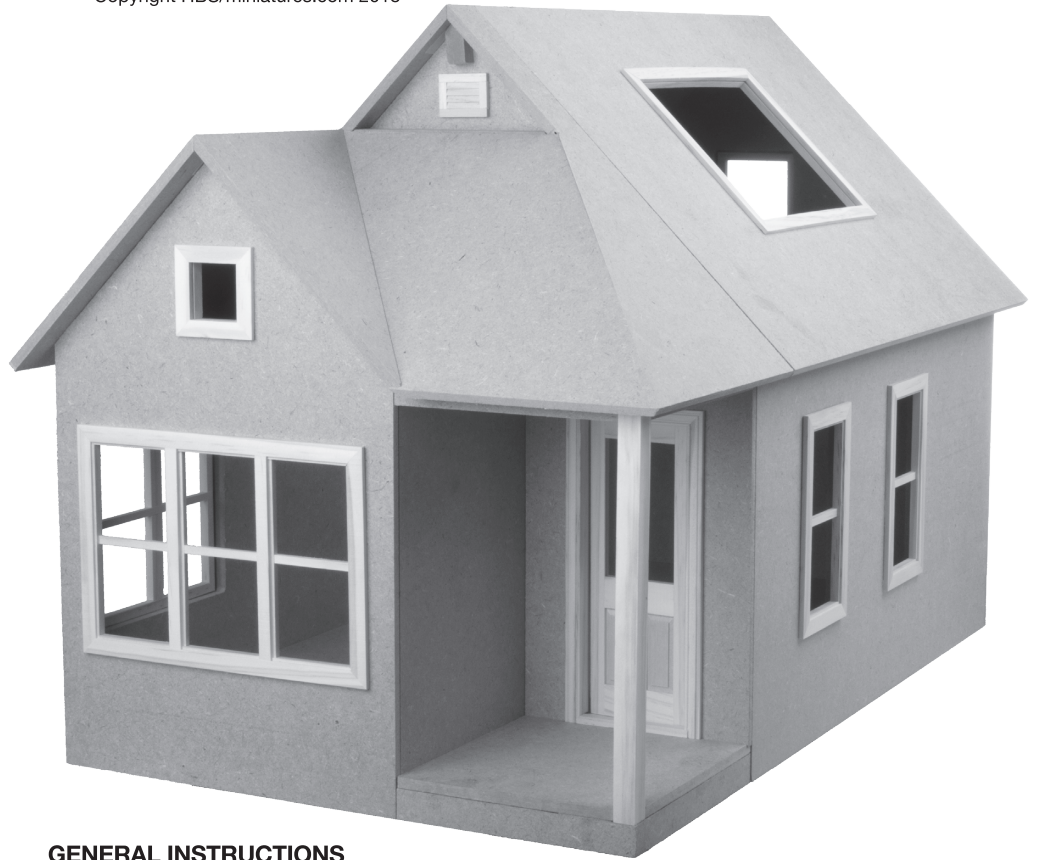
- (1) Floor
- (1) Front wall
- (1) Back wall
- (1) Right wall
- (1) Left wall
- (1) Right roof
- (1) Left roof
- (1) Right roof fixed panel
- (1) Front Roof Panel
- (1) Porch wall
- (1) Small gable right roof
- (1) Loft partition wall
- (1) Door wall
- (1) Floor loft/Porch ceiling
- (2) Porch roof supports
- (2) Porch foundations
- (1) Right roof support
- (1) Ridge beam
- (1) Gable shelf

WHITWOOD PARTS:

- (1) Porch posts
- (1) Door
- (1) Vent
- (1) Skylight
- (8) Windows
- Interior trim for door and windows

SUPPLIES NEEDED:

- Masking tape
- White glue (such as #1249 Weldbond)
- Ruler
- Pencil



GENERAL INSTRUCTIONS

- Read all the instructions before you begin.
- Choose a work surface that is clean, dry and protected from glue spills.
- Make sure all parts are in the kit.
- Do a dry fit, using masking tape to hold parts in place, to make sure everything fits together correctly before permanent assembly.

The Three Gables House is smooth MDF with whitewood components and trim.

Tip: Plan the finishes for the interior and exterior at the dry-fit stage, before final/permanent assembly. It is easier to finish the panels as flat surfaces. Disassemble and finish as desired, then reassemble using glue.

Separate the MDF floor, main walls and roof pieces from the smaller pieces. Set aside the door/windows/skylight and their interior trim package. "Left" and "right" are as if the viewer is looking at the front of the house.

STRUCTURE ASSEMBLY:

Step 1. Find the two porch foundation pieces (short lengths of square MDF with a 45° angle at one end). Glue the angled ends together to make a right-angle section. This will not need to be disassembled for finishing. Tape the joint together while the glue dries.

Step 2. On the work surface, stand the left wall and back wall upright, grooves facing inward. Fit the corner together and secure

with masking tape. Tip this assembly down onto the back wall and fit the floor panel (grooves up and at the front) into the wall grooves. Fit the right wall into place and secure the corner with masking tape. Stand the house upright.

Step 3. Fit the front wall into place and secure the corner with masking tape. Fit the door wall into place (it can go either way) and secure the corner (where it joins the right wall) with masking tape. Fit the porch wall in place and secure the corners with masking tape.

Step 4. Put the porch foundation in place (it fits only one way) and secure with masking tape.

Step 5. The loft floor/porch ceiling has notches cut into three corners. The one un-notched corner goes at the left front. Slide it into the front wall groove and fit it into the left wall groove. It should fit well and not need to be taped.

Step 6. Fit the porch roof support pieces onto the porch ceiling, bevel edge up. The shorter piece is at the front. Note: there will be a gap in the beveled edge between the porch roof support and the

right side wall. It will not show when the house is assembled. The porch post, a 9" length of 1/2" square strip wood, is packed with the windows. It fits in place at the outer porch corner but does not need to be installed for dry fit.

ROOF ASSEMBLY:

Step 1. On the loft partition wall, measure 8 centimeters (slightly more than 3 1/8") down from each side of the notch at the top and draw a line across the panel. The gable shelf should be attached along (or just below) this line so that the beveled edges are flush with the edges of the partition. Do not glue it yet.

Step 2. The loft partition wall sits upright on top of the loft floor at the back edge. Tape it in place, then fit the notches of the ridge beam into the notches of the back wall and loft partition wall. The ridge beam has recesses to hold magnetic plates; they should be on the right side.

Step 3. Place both right roof panels flat on the work surface so that the bevels at the top align and the lap joints connect. Tape the lap joint securely.

Step 4. Using the already-assembled house as a brace, stand the left and right roof panels upright on their back edges so that the beveled edges meet. Securely tape the roof ridge joint together.

Step 5. Set the roof on the house. The front edges that form the top gable should be flush with the front edge of the gable shelf.

Step 6. Position the front roof panel with the beveled edges underneath and the cut-off corner at the top left. Fit it into place so

that the right edge joins the right roof panel and the top edge joins the gable shelf. Tape securely.

Step 7. Put the small gable right roof in place; the right angle is forward and the beveled edges are underneath. Fit and tape the gable ridge, then the valley.

Step 8. Reach through the skylight opening and draw a line on the removable roof panel where it meets the wall. Glue the right roof support on the inside of the roof panel, above the line, so that it provides an extra brace to prevent the roof from sliding down.

Dry-fit assembly complete!

FINAL ASSEMBLY NOTES:

During finishing of the unassembled panels, please be very careful not to get any paint, glue, wallpaper or other substance on the surfaces that will be glued together. The parts go together very precisely and may not fit if they are not completely clean.

When you are ready to glue your kit together, install the small metal plates with screws into the right side of the ridge beam. (*Note that the plates do have a right side, with a countersunk hole to allow the screw head to be flush.*) Press the magnets into the holes in the removable roof panel. They are a very tight fit and should not need glue of any kind.

It will probably be easiest to keep the removable panel taped to the fixed panel while you are gluing the roof in place, but be sure there is no glue on the ridge beam where the panel will rest.



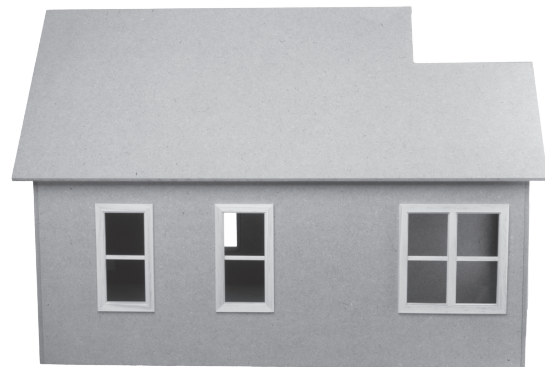
Front Side



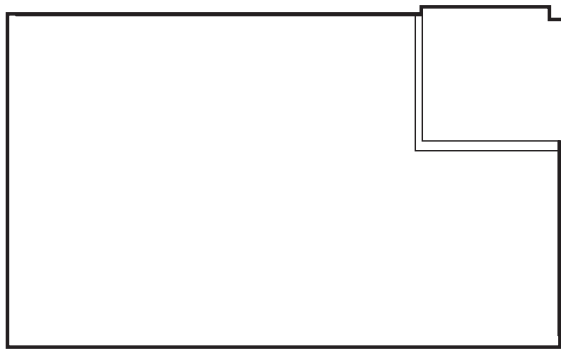
Back Side



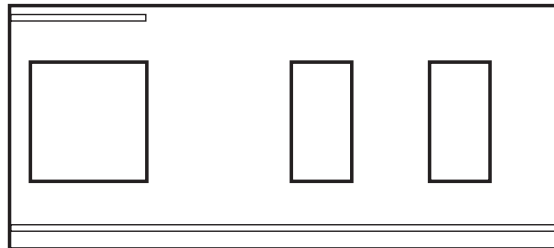
Right Side



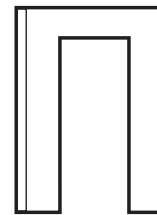
Left Side



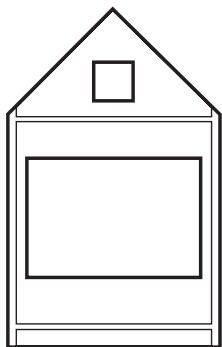
Floor



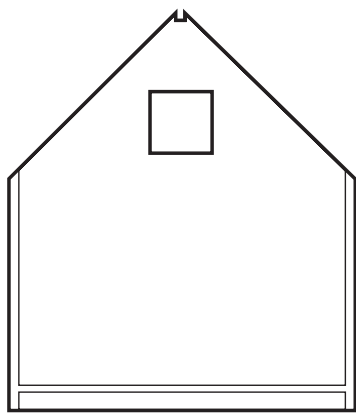
Left wall



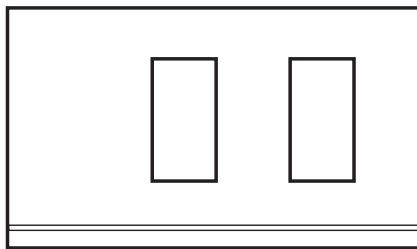
Door wall



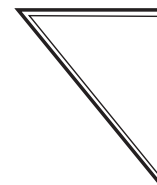
Front wall*



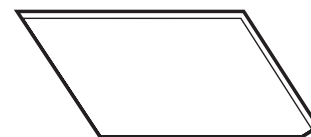
Back wall



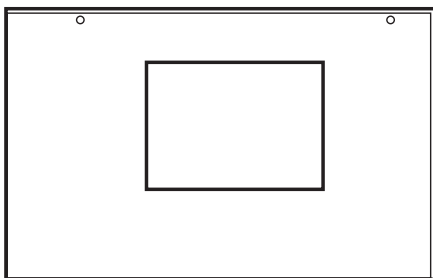
Right wall



Small gable right roof*



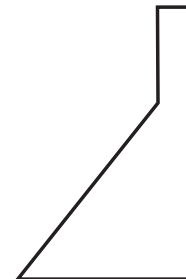
Front Roof Panel*



Right roof*



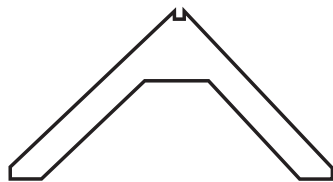
Left roof*



Right roof fixed panel



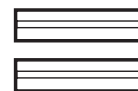
Porch wall



Loft partition wall



Floor loft/Porch ceiling



Porch roof supports*



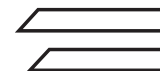
Ridge beam



Right roof support



Gable shelf



Porch foundations

*Illustrations are drawn to show grooves and bevels details. In some cases, these details will face away from you during installation.